



## HC Series Heaters for Aggressive Acids & Chemicals

HC Series in-line heaters are ideal for high-temperature, ultrapure processes. They feature PFA flow paths for optimal compatibility with aggressive chemicals. Their special internal fittings eliminate O-rings seals for enhanced cleanliness. HC heaters utilize the low-mass Heateflex<sup>®</sup> heating element with low watt density to provide fast, powerful temperature response.

### Features & Benefits

- Ultrapure PFA wetted surfaces for optimal chemical compatibility
- Specialty fittings eliminate wetted O-rings to enhance cleanliness and reduce potential for leaks
- Fast, powerful temperature response from low-mass heating element with low watt density
- Up to 120°C at 60 psi
- 1-10 kW models available

### Safety Features

- Junction box isolates heater and sensor wires from harsh environments
- Over-temperature thermocouple regulates temperature by limiting heat within housing
- Thermal cut-off ensures temperature does not exceed range to prevent overheating
- Process thermocouple ensures fluid temperature is accurately maintained
- Platinum-tipped ground wires protect user and heater



## Specialty LHT Series Heaters for Higher Power

LHT Series heaters offer maximum power in compact designs with ultrapure, PFA flow paths. They feature the Heateflex<sup>®</sup> heating element with a low watt density for fast temperature response. LHT heater models are available from 1-42 kW and offer great flexibility for customizing voltage, power, and more .

### Features & Benefits

- Ultrapure PFA wetted surfaces for chemical compatibility
- Customized voltages, power outputs, and safety features
- Fast temperature response with increased power
- Increased power in small footprint
- Up to 95°C at 60 psi
- 1-42 kW models available

## Ultrapure PFA Fluid Heating Element

PFA in-line fluid heaters feature the Heateflex<sup>®</sup> heating coil. This heating element offers excellent power output in a compact package. It has a low watt density, which extends the heater life by spreading out the wattage. The heating element is coated in PFA materials, which eliminates the need for nitrogen purge, and reduces operating costs.

Model	Wetted Material	Housing Material	Max Temp*	Pressure	Power	Voltage
HC	PFA	Pipe	120°C	60 psi at 120°C	1-10 kW	120-480 VAC, 1 and 3-phase
LHT	PFA	Pipe	95°C	60 psi at 95°C	1-42 kW	208-480 VAC, 1 and 3-phase

\* Dependent on voltage.



Heateflex<sup>®</sup> heating element



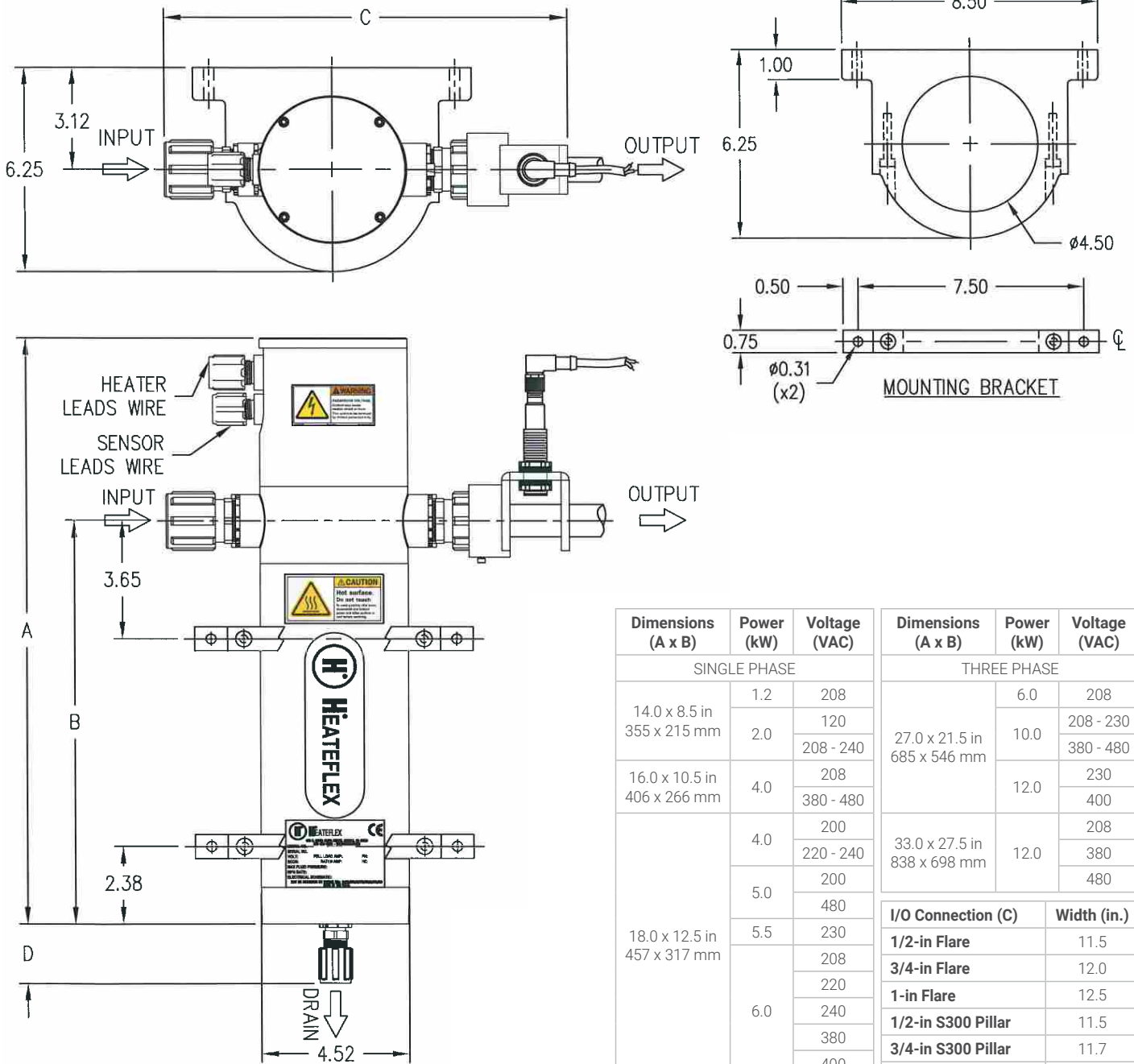
Controls available for a complete turnkey system.





# Ultrapure In-Line PFA Fluid Heaters

## Dimensions



Dimensions (A x B)	Power (kW)	Voltage (VAC)	Dimensions (A x B)	Power (kW)	Voltage (VAC)	
SINGLE PHASE			THREE PHASE			
14.0 x 8.5 in 355 x 215 mm	1.2	208	27.0 x 21.5 in 685 x 546 mm	6.0	208	
	2.0	120		10.0	208 - 230	
208 - 240		380 - 480				
16.0 x 10.5 in 406 x 266 mm	4.0	208	12.0	230		
		380 - 480		400		
18.0 x 12.5 in 457 x 317 mm	4.0	200	33.0 x 27.5 in 838 x 698 mm	12.0	208	
		220 - 240			380	
	480	480				
	5.5	230	I/O Connection (C)	Width (in.)		
		208			1/2-in Flare	11.5
		220			3/4-in Flare	12.0
240		1-in Flare			12.5	
6.0	380	1/2-in S300 Pillar	11.5			
	400	3/4-in S300 Pillar	11.7			
	480	1-in S300 Pillar	12.0			
26.0 x 20.5 in 660 x 520 mm	9.0	240	Drain Connection (C)    Width (in.)			
	10.0	208 - 230	1/2-in Flare	11.5		
		380 - 480	1/2-in S300 Pillar	11.5		

