

Don't let process fluid handling problems frustrate your day. ICD/Heateflex has the track record and customer list to back-up its performance and reliability. This multipurpose station for heating, filtering, and recirculating corrosive acids and high purity solutions eliminates tank components and extends the life of your process fluids.

Additional benefits include: increased yields, improved quality and reduced chemical waste. All this equals greater return on investment. Let our highly focused experience in this field be your partner for success.

BENEFITS:

Reduces chemical expenses by extending chemical life through continuous filtration.
Reduces particle contamination and increases yields.
Increases safety and throughput due to reduced chemical change-over frequency.

FEATURES:

Remote heating, filtering, and recirculation.
Thread-less, fusion-bonded fittings available to minimize particle entrapment.
Microprocessor-Based temperature controller/timer with Temperature accuracy + 0.5° C.

SAFETY INTERLOCKS TO HEATER POWER:

Liquid-level safety.
Thermocouple over-temperature protection in the heater.
Process temperature high limit.

FACILITIES:

Pump rated to 10 GPM.
Standard filtration level to 0.2 microns (0.1 microns on request).
Heater: 2 kW, single phase, 120 VAC (other wattages and voltages available).

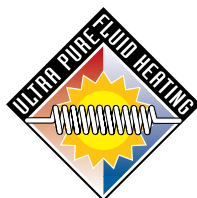
TEMPERATURE RATINGS:

Polypropylene	to	80° C
PVDF	to	95° C
PFA	to	150° C

Dimensions: Normal: 24"h x 18"w x 14"d.
Fusion Bonded: 32"h x 30.75"w x 15"d.

AVAILABLE OPTIONS:

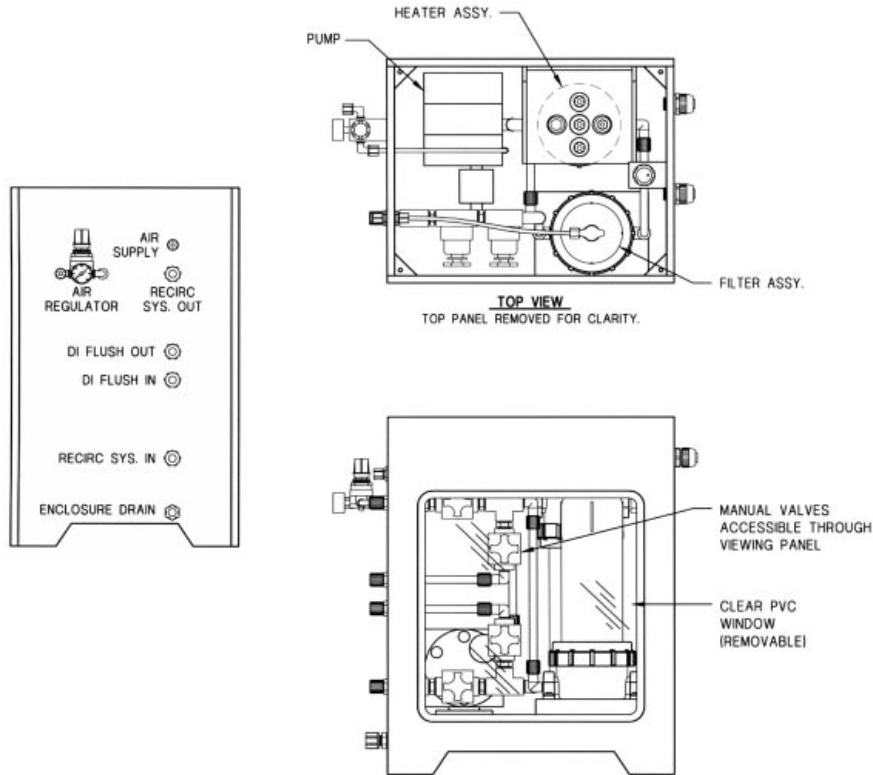
Custom designs for your special requirements.



ICD/HEATEFLEX

405 E. Santa Clara St.,
Arcadia, CA 91006-7218
Tel: (626) 599-8566 • Fax: (626) 599-9567
<http://www.heateflex.com>

HEATEFLEX® COMPACT, ULTRA-PURE HEATING/PUMPING/FILTERING SYSTEMS



STANDARD MODEL SPECIFICATIONS:

MODEL NUMBER	PUMP WETTED MATERIAL	PUMP FLOW RANGE	PUMP MAX. TEMP.	FILTER HOUSING MATERIAL	FILTER ELEMENT MATERIAL	FILTER MICRON RATING	HEATER KW RATING	HEATER VOLTS AC	HEATER HOUSING MATERIAL
HPF1-01-01-B10	Polypro	0-10 GPM	80°C	Polypro	Polypro	0.2μ	1 KW	120VAC	PVDF
HPF1-01-01-B20	Polypro	0-10 GPM	80°C	Polypro	Polypro	0.2μ	2 KW	120VAC	PVDF
HPF2-03-01-B10	PVDF	0-10 GPM	100°C	PVDF	Polypro	0.2μ	1 KW	120VAC	PVDF
HPF2-03-01-B20	PVDF	0-10 GPM	100°C	PVDF	Polypro	0.2μ	2 KW	120VAC	PVDF
HPF3-02-02-B1	PFA	0-10 GP	100°	PFA	PFA	0.2	1 K	120VA	PFA
HPF3-02-02-B2	PFA	0-10 GP	100°	PFA	PFA	0.2μ	2 K	120VA	PFA
HPF4-02-02-B1	TFE,PFA	0-5 GP	150°	PFA	PFA	0.2μ	1 K	120VA	PFA
HPF4-02-02-B2	TFE,PFA	0-5 GPM	150°	PFA	PFA	0.2μ	2 K	120VA	PFA
P151-01-01	Polypro	0-10 GPM	80°C	Polypro	Polypro	0.2μ	(PUMP/FILTER STATION, NO HEATER)		
P152-03-01	PVDF	0-10 GPM	100°C	PVDF	Polypro	0.2μ	(PUMP/FILTER STATION, NO HEATER)		
P153-02-0	PFA	0-10 GPM	100°C	PFA	PFA	0.2μ	(PUMP/FILTER STATION, NO HEATER)		

FUSION-BONDED MODEL SPECIFICATIONS:

MODEL NUMBER	PUMP WETTED MATERIAL	PUMP FLOW RANGE	PUMP MAX. TEMP.	FILTER HOUSING MATERIAL	FILTER ELEMENT MATERIAL	FILTER MICRON RATING	HEATER KW RATING	HEATER VOLTS AC	HEATER HOUSING MATERIAL
HPF6-02-02-B1	PFA	0-10 GP	100°	PFA	PFA	0.2μ	1 KW	120VAC	PFA
HPF6-02-02-B2	PFA	0-10 GP	100°	PFA	PFA	0.2μ	2 KW	120VAC	PFA
HPF7-03-01-B10	PVDF	0-10 GPM	100°C	PVDF	Polypro	0.2μ	1 KW	120VAC	PVDF
HPF7-03-01-B20	PVDF	0-10 GPM	100°C	PVDF	Polypro	0.2μ	2 KW	120VAC	PVDF
P156-02-0	PFA	0-10 GP	100°	PFA	PFA	0.2μ	(PUMP/FILTER STATION, NO HEATER)		
P157-03-01	PVDF	0-10 GPM	100°C	PVDF	Polypro	0.2μ	(PUMP/FILTER STATION, NO HEATER)		
P158-01-01	Polypro	0-10 GPM	80°C	Polypro	Polypro	0.2μ	(PUMP/FILTER STATION, NO HEATER)		

All data subject to change without notice.